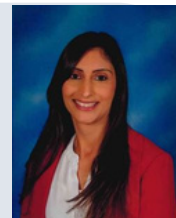




Growing minds, shaping futures and inspiring lifelong learning

# Houghton Regis Primary School Newsletter

Friday 9<sup>th</sup> January 2026



Headteacher: Mrs R Parmar  
Chair of Governors: Mr T Muldownie

Dear Parents, Carers & Children,

Happy New Year! I hope you all had a lovely break and were able to make new memories with your children, family and friends over the festive period. As a school, we remain incredibly proud of the children's resilience and determination shown last term. Thank you for your support and openness - as a school, we hope that you feel your views are listened to and valued and that we can work together to give your child the best possible opportunities in their primary years.

Apart from freezing temperatures, we have had a positive first week back and the children have settled back into routine. As well as welcoming our existing children back, I would like to extend a warm welcome to the new children in both nursery and other year groups who have joined our school this term.

Our week began with training for staff, where we further discussed our new approach to behaviour with Therapeutic Thinking, as well as focusing on how to create a positive learning environment. In assembly, I discussed the meaning of New Year and the relevance of making new year resolutions or setting targets and goals. Children had time to reflect and share their own goals and targets for 2026. We celebrated Miss Coleman achieving her new year's resolution from last year - she set herself a target of reading 75 books and even created a journal for each book!

On Tuesday, we are hosting our second PINS coffee morning. Kerry Majchrowski, a Parent Representative from the SNAP Parent Forum will be leading the session. We look forward to welcoming all of our families to this event - it will begin at 9am and will be held in the hall.

On Tuesday, we also have our parent consultation evening for Red class and Teal class - please see the Spring Term events page further down for the details. Please enter via the main reception for your appointment.

We are monitoring attendance across the school and would like to remind all parents and carers of the importance of ensuring your child is at school every day, on time. The children are fully involved in celebrating attendance and we share the results every week in our celebration assembly. The class with the highest attendance in each key stage is able to choose a reward from a wheel of rewards. These range from sitting with a friend all day, choosing fun lessons, having a class party and many more. These rewards were suggested by the children last term and the winning classes are always enthused and excited to celebrate their attendance.

Wishing you all a restful weekend. I look forward to seeing you on the gate next week.

Thank you for your continued support.

*Mrs R Parmar*

Headteacher

## Uniform Expectations

- White plain polo shirt/blouse or white shirt and school tie (optional)
- Bottle green sweatshirt or cardigan (with school logo - optional)
- Grey trousers or grey skirt/pinafore (knee length)
- Leggings are not permitted
- White or grey socks
- White or grey tights
- Black school shoes

## PE Days

Nursery—Monday  
Reception—Wednesday  
Year 1—Thursday & Friday  
Year 2—Tuesday & Wednesday  
Year 3—Monday & Friday  
Year 4—Monday & Thursday (Yellow)  
Friday (Blue)  
Year 5—Monday & Thursday  
Year 6—Monday & Wednesday

## Attendance Winners

EYFS/KS1: Purple with 100%  
Reward - Fun afternoon  
KS2: Amber with 98.9%  
Reward - Extra breaktime  
Whole School: 96.2%

## Housepoint Winners

Brunel - 98 points  
Bell - 78 points  
Johnson - 52 points  
Curie - 45 points

Happiness - Independence - Excellence - Respect - Ambition

# Headteacher Awards

*Congratulations to the following children:*

*Early Years: Noah T, Lillah O'D, Nehemiah K O, Marley R*

*Years 1 & 2: Talyn A, Jaxon A, Saoirse D, Liliana P*

*Years 3 & 4: Theo R-S, Mia G, Zainab P, Hannah K*

*Years 5 & 6: Sherwain T, Oliver G, Bailey B, Jayla G*



## Kidz Zone Before & After School Club Information

If you would like further information on Kidz Zone, please visit their website or book on [www.kidzzzoneclub.com](http://www.kidzzzoneclub.com)

## Is your child due to start school in September 2026?

If you have a child due to start Reception in September 2026, applications need to be made via the Central Bedfordshire School Admissions portal

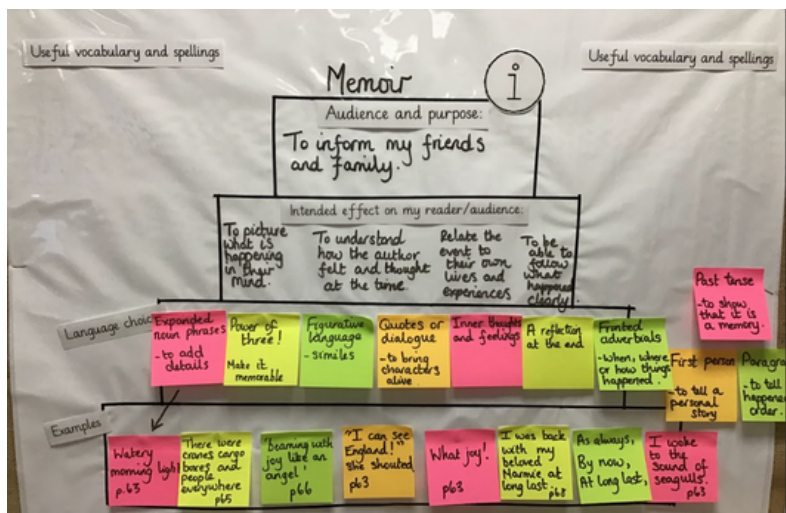
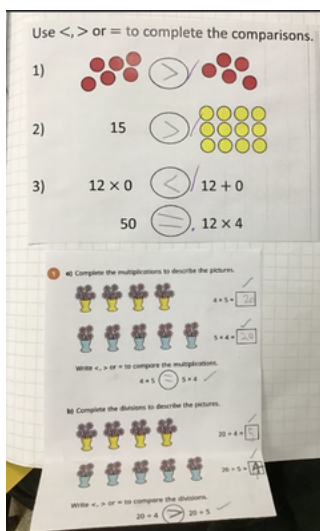
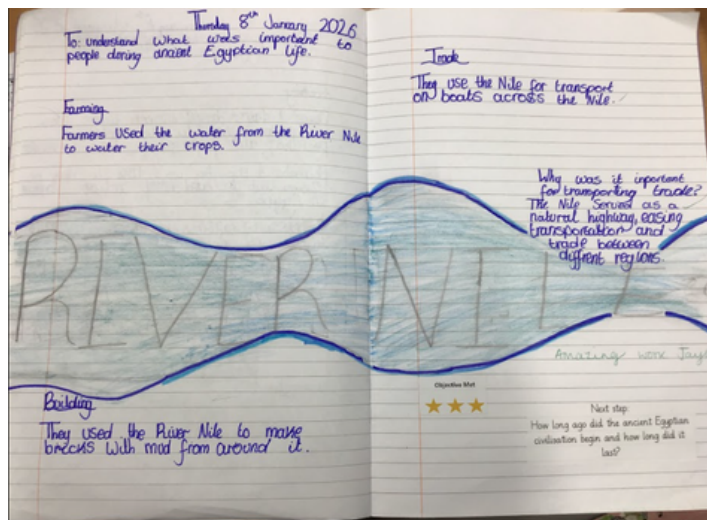
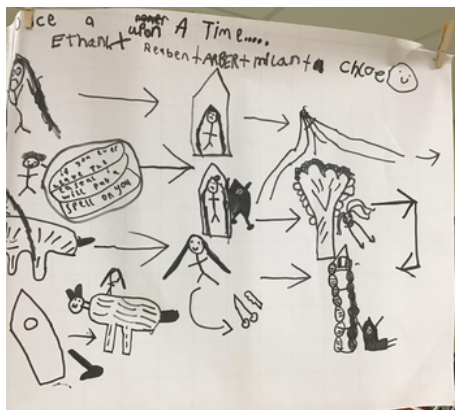
[https://www.centralbedfordshire.gov.uk/info/5/school\\_admissions/496/apply\\_for\\_a\\_new\\_lower\\_or\\_primary\\_school\\_place](https://www.centralbedfordshire.gov.uk/info/5/school_admissions/496/apply_for_a_new_lower_or_primary_school_place)

The deadline for applications is **Thursday 15th January 2026** and you are encouraged to use all 3 preferences and name 3 different schools closest to your catchment. If you would like to book a visit to our school or if you require any support with the online application, please do come and speak to a member of our school admin team.

## Bronze Awards - 100 Dojo Points



# Our learning this week...



## Spring Term Events

Date	Time	Year Group	Event	Location
Tuesday 13 <sup>th</sup> January	9:00-10:30am	All	SNAP Parent Carer Forum Coffee Morning	Hall
Tuesday 13 <sup>th</sup> January	12:00-6:00pm	Year 6 - Red Class	Parent Consultation Evening - appointments are available to book via ClassDojo	Enter via School Office
Tuesday 13 <sup>th</sup> January	4:00-5:30pm	Year 3 - Teal Class	Parent Consultation Evening - cancelled appointments from previous term. Mrs Zarrouq will speak directly to parents	Enter via School Office
Thursday 15 <sup>th</sup> January		Nursery	Deadline for submitting primary school applications to the Local Authority <i>(for children starting school in September 2026)</i>	Online
Thursday 22 <sup>nd</sup> January	2:45pm	Year 6 - Indigo Class	Class Assembly - parents invited	Hall
Thursday 29 <sup>th</sup> January	2:45pm	Year 6 - Red Class	Class Assembly - parents invited	Hall
Thursday 5 <sup>th</sup> February	2:45pm	Year 4 - Blue Class	Class Assembly - parents invited	Hall
Monday 2 <sup>nd</sup> - Tuesday 3 <sup>rd</sup> February		Year 5	Residential Trip	
Thursday 12 <sup>th</sup> February	2:45pm	Year 4 - Yellow Class	Class Assembly - parents invited	Hall
<b>Friday 13<sup>th</sup> February</b>		<b>All</b>	<b>Friends of HRPS Non-Uniform day - wear red for Valentine's Day</b>	
Monday 16 <sup>th</sup> - Friday 20 <sup>th</sup> February		All	Half-Term	
Monday 23 <sup>rd</sup> February		All	Children return to school	

# Our Leadership Team



Headteacher  
Mrs R Parmar



Assistant Headteacher—  
Pastoral & Inclusion  
Ms D Faure-Alexis



Assistant Headteacher—  
Academic &  
Lower Key Stage 2 Leader  
Mr D de Gouviea-Smith



School Business  
Manager  
Mrs F Jones



EYFS & Key Stage 1 Leader  
Lead Practitioner  
Miss M Davidson



Deputy Key Stage 1  
Leader  
Miss S Hayat



Key Stage 2  
Leader  
Miss E Naisby

# Friends of HRPS

## What is a PTA?

PTA stands for Parent Teacher Association. Volunteer organisations like this are usually composed of parents, class reps, teachers and other school staff who come together for regular meetings to discuss the school year and upcoming events.

PTAs bridge the gap between parents, teachers and pupils, helping to build productive relationships and further ensure the school is a place where pupils can thrive.

PTAs are now established in most schools and parents enjoy working closely with teachers, creating bonds with other parents, fundraising for events, working with the local community and learning more about the curriculum.

At our school, we are known as Friends of HRPS.

## What do we do?

Friends of HRPS aim to accomplish a range of things, all usually geared at making the school a better place to learn. We work together to raise money with a variety of creative events throughout the school year, encouraging the whole community to get involved.

## Friends of HRPS events

In previous years, we have organised summer fetes, Santa's Christmas Grotto, discos and a sponsored walk to name a few.

## Why is our role so important?

We give parents more of a voice and get them feeling involved. Parents can provide the school community with a fresh perspective and highlight any concerns in a supportive environment.

The organisations are also instrumental in providing additional opportunities for pupils by strengthening the overall school experience.

## Why should you join Friends of HRPS?

Being a part of your child's school community has several benefits:

- Scheduled meetings allow parents to keep up to date with upcoming academic events and socials.
- It creates stronger relationships with staff members, where they can easily communicate expectations and standards of learning.
- It allows parents to establish relationships and network with other parents.
- Parents can support the school in creating the best environment possible for their child and other pupils, helping make a real difference.
- Friends of HRPS members can learn new skills, from fundraising and problem-solving to communication and creativity.
- As a member of Friends of HRPS, you'll be able to see measurable results and appreciate the impact of all your efforts!

**Please email the Chair, Mrs R Reid-Stavrinides at: [ptahrps@gmail.com](mailto:ptahrps@gmail.com) if you would like to find out more information.**

# EVERY SCHOOL DAY MATTERS



## Penalty Notice Fines for absence from school are changing

From 19<sup>th</sup> August 2024 Penalty Notice fines increase to £160 for each parent, for each child.



You can be fined if your child has a total of 5 days of unauthorised absences in 10 school weeks, for things like:

- being late after the register has closed
- truancy
- taking a holiday without permission from the school
- or if a headteacher isn't satisfied for the reason for missing school

Over a rolling 3-year period the sanctions are:

- 1st offence – £160 reduced to £80 if paid within 21 days
- 2nd offence – £160
- 3rd offence – Court hearing and up to £2,500 fine, or up to 3 months in prison and a criminal record

For more information go to:  
[www.centralbedfordshire.gov.uk/missing-school](http://www.centralbedfordshire.gov.uk/missing-school)



**BURGER DAY**  
**JAN 15TH**

**MAIN MENU**

Chicken Fillet Burger

or

Beef Burger

or

Plant Grill (Ve) (Free From\*)

or

Jacket Potato  
with Various Toppings

or

Roll with Various Fillings

**SERVED WITH**

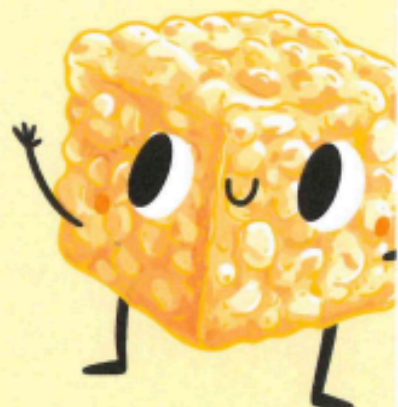
Baked Potato Wedges

Sweetcorn

Coleslaw

**DESSERT**

Golden Krispie Cake



@hclcatering

www.hcl.co.uk

Menus are subject to change due to supplier stock availability. \* Free from the key 14 allergens and plant based/vegan

# SEND Dance Classes

Fun and inclusive classes for those with suspected or diagnosed additional needs

## Imagine & Move | 4 – 4.30pm

Sensory movement class for those aged 3+  
Aimed at those who need support from a parent/carer to participate  
*£5 per class invoiced termly*



## Magic Movers | 4.45 – 5.30pm

Creative dance class for those aged 7+  
For those who can follow instruction and participate independently  
*£7 per class invoiced termly*

**Introductory offer:  
20% off for Spring Term!**

15<sup>th</sup> January – 26<sup>th</sup> March (No class 19<sup>th</sup> February)



Thursdays during term time  
at Houghton Regis Leisure Centre

**Limited spaces! Book now:**  
[info.imaginationarts@yahoo.com](mailto:info.imaginationarts@yahoo.com)  
07394 934911



Central  
Bedfordshire  
Council



**FREE**

Don't miss out! Join us  
at our coffee event  
and pick up your free  
hard copy of the booklet



## Welcome from SNAP Parent Carer Forum!

We are inviting you to join our second PINS Coffee Event

Date: 13<sup>th</sup> January 2026

From: 9am To: 10.30am

Place: Houghton Regis Primary School



*Come along to a coffee and a chat about our 'Supporting Your Neurodiverse Child/Young Person' Booklet*

When you first realise that your child/young person experiences the world in a different way it can feel overwhelming. But once you begin to understand their way of thinking it can be rewarding and you can learn so much from them. This booklet is full of useful information and strategies to help support you on this journey.

### The Goal

To help every child feel included, understood, and supported—especially those with Special Educational Needs and Disabilities (SEND)

### PINS is designed to:

- ✓ Help schools improve how they support children with SEND
- ✓ Offer early help to children who may be struggling - with or without a diagnosis
- ✓ Provide training for school staff to build skills and confidence
- ✓ Enhance communication and partnerships between schools and families

**MORE INFORMATION**



For more information please email  
[PINS@snappcf.org.uk](mailto:PINS@snappcf.org.uk) and see our PINS webpage



**SNAP PARENT CARER FORUM**  
CENTRAL BEDFORDSHIRE



Partnerships for Inclusion of  
Neurodiversity in Schools

**BOOK  
NOW!**

## **FREE Face to Face Sensory Workshops for Parent Carers as part of the PINS Project.**

We are excited to announce they will be delivered by  
Blossom Therapy's Specialist Level Occupational Therapists.

### **Supporting Children and Young People with the Morning Transition**

- Understanding barriers to leaving the house
- The importance of the morning routine
- Learn helpful tips and strategies to aid regulation prior to school including self care

#### **Session 1:**

**Date: Wednesday 4<sup>th</sup> February**

**Time: 9:45 - 12:30pm**

**Venue: Moorfield Room, The Rufus Centre, Steppingley Road, Flitwick,  
MK45 1AH**

**Training provided by**



**Blossom**  
Children's Occupational Therapy

#### **Session 2:**

**Date: Monday 23<sup>rd</sup> March**

**Time: 9.45am - 12.30pm**

**Venue: Moorfield Room, The Rufus Centre, Steppingley Road, Flitwick,  
MK45 1AH**

**Limited spaces available, booking is essential!**

Please book your place by emailing 'Morning Transition', your preferred session  
(Session 1 or Session 2) and your name to: [PINS@snappcf.org.uk](mailto:PINS@snappcf.org.uk).

**NB: Both sessions cover the same content**



**Bedfordshire, Luton  
and Milton Keynes**  
Integrated Care Board



**Cambridgeshire  
Community Services**  
NHS Trust

**GO  
ALL  
IN.**

National  
Year of  
Reading  
2026

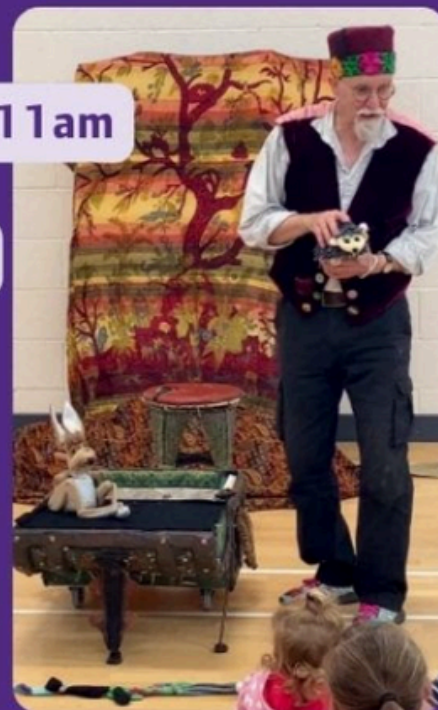
Central  
Bedfordshire  
Libraries

## **Theatre of Widdershins presents a series of traditional tales**

Enjoy family theatre amongst the bookshelves

- **Leighton Buzzard Library - Sat 31 Jan 11am**
- **Shefford Library - Fri 6 Feb 4pm**
- **Dunstable Library - Sat 7 March 11am**
- **Stotfold Library - Fri 13 March 4pm**
- **Barton Library - Tues 31 March 2pm**
- **Flitwick Library - Fri 10 April 2pm**
- **Toddington Library - Sat 9 May 2pm**

Tickets: Children £5, Adults £5 available at the host library or online via eventbrite (booking fee applies)



Channel 4's The Dog House is looking for local families to offer a loving home to a rescue dog and share their reasons why on the show!

If you are interested, find out more here:  
<https://c4thedoghousetakepart.co.uk> or email  
[thedoghouse@fivemilefilms.co.uk](mailto:thedoghouse@fivemilefilms.co.uk)

# NEW YEAR, NEW LEASH OF LIFE



**ADOPT A RESCUE DOG  
& BE PART OF  
CHANNEL 4'S**

*the*  
**Dog House**



**APPLY HERE**



**C4THEDOGHOUSE TAKEPART.CO.UK**