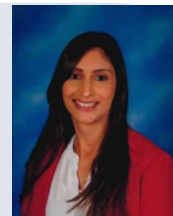




Growing minds, shaping futures and inspiring lifelong learning

Houghton Regis Primary School Newsletter

Friday 30th January 2026



Headteacher: Mrs R Parmar
Chair of Governors: Mr T Muldownie

Dear Parents, Carers & Children,

As another lively week draws to a close, I have been reflecting on just how much has been achieved across the school. It certainly has been a busy term, filled with hard work, enthusiasm and a great deal of exciting learning. We have invested in new curriculum schemes, our new values have been learnt by all and we are continuing to instil our behaviour expectations across the school.

Walking around the school, I continue to be impressed by the positive attitudes our staff and children bring to every lesson. From thoughtful discussions and creative writing to imaginative projects and practical experiments, there has been a real sense of purposeful learning. I am proud to see children challenging themselves, supporting one another and taking pride in their achievements.

The children in Red class performed their assembly this week. We were impressed with their ability to share their learning with such confidence and enthusiasm. Thank you to Miss Coleman, Mrs Jenkins and Mrs Cobb for encouraging and supporting the children with this assembly.

Next week, our year 5 children will be heading off for their much anticipated residential trip. We cannot wait to hear all about their adventures in teamwork, resilience and outdoor fun. If your child is attending this trip, they must arrive at school no later than 8:45am on Monday morning.

The children in year 2 will be embracing their history learning about lives of significant individuals by taking part in a Florence Nightingale WOW day. Children are invited to come to school dressed as a nurse, doctor or injured army soldier. It will be an enjoyable experience for all!

On Thursday, we look forward to welcoming parents to Blue's class assembly. This will begin at 2:45pm and will be held in the hall.

Our boys' and girls' football teams played their matches away this afternoon - we are eagerly waiting to hear the final results.

We have again, continued to have a number of children off school this week due to various illnesses. If your child is absent, please ensure you inform the school office or alternatively, you can notify us via Studybugs.

We had an incident this week involving a group of children using inappropriate language and sharing content via a WhatsApp group chat. I would like to remind all parents and carers that it is your duty to ensure you are monitoring the use of your child's social media by ensuring they are accessing age appropriate material and platforms. It is also advised that you monitor your children's use of screen time. There are settings on devices that allow you to manage the amount of time your children spend on devices. For further information, please refer to our E-Safety page on our website <https://www.houghtonregisprimary.co.uk/e-safety/>. Thank you for your support in helping us keep all children safe.

At the end of this half term, we will be saying goodbye to Mrs Osborne as she takes retirement after working here for almost 30 years. Please join me in wishing her well during her last 2 weeks with us and for the future.

I wish you all a restful weekend and look forward to seeing you all next week.

Mrs R Parmar

Headteacher

Uniform Expectations

- White plain polo shirt/blouse or white shirt and school tie (optional)
- Bottle green sweatshirt or cardigan (with school logo - optional)
- Grey trousers or grey skirt/pinafore (knee length)
- Leggings are not permitted
- White or grey socks
- White or grey tights
- Black school shoes

PE Days

Nursery—Monday
Reception—Wednesday
Year 1—Thursday & Friday
Year 2—Tuesday & Wednesday
Year 3—Monday & Friday
Year 4—Monday & Thursday (Yellow)
Friday (Blue)
Year 5—Monday & Thursday
Year 6—Monday & Wednesday

Attendance Winners

EYFS: Ruby with 95%

Reward - Play games

KS1: Coral with 96.7%

Reward - Have a class party

LKS2: Teal with 98.6%

Reward - Have a fun afternoon

UKS2: Red with 99.3%

Reward - Longer lunch break

Whole School: 95.1%

Housepoint Winners

Brunel - 36 points

Curie - 32 points

Bell - 31 points

Johnson - 25 points

Happiness - Independence - Excellence - Respect - Ambition

Headteacher Awards

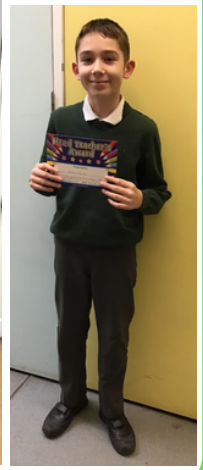
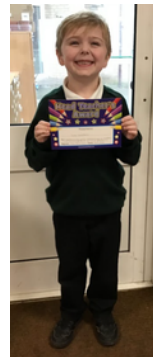
Congratulations to the following children:

Early Years: Elyanna N, Finley B, Vaakeeshan S, Polly S

Years 1 & 2: Mollie G, Aria P, Joshua C, Leo W

Years 3 & 4: Francesca K, Davi A, Alanna M, Abbie D

Years 5 & 6: Arthur D, Emilia C, Aurea M, Aiden N



Kidz Zone Before & After School Club Information

If you would like further information on Kidz Zone, please visit their website or book on www.kidzzoneclub.com

Walk your wheels

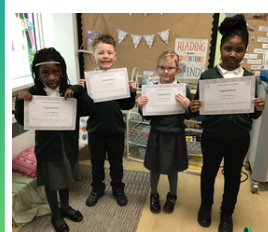
A reminder that children need to 'walk their wheels' on the school premises before school and at the end of the day. Staff patrolling the playground will be reminding children of these rules in order to keep everyone safe by preventing any accidents from happening.



Bronze Awards - 100 Dojo Points



Silver Awards - 200 Dojo Points



Our learning this week...



Friday 26th January 2020
deception:

Dear Miss Farmer,

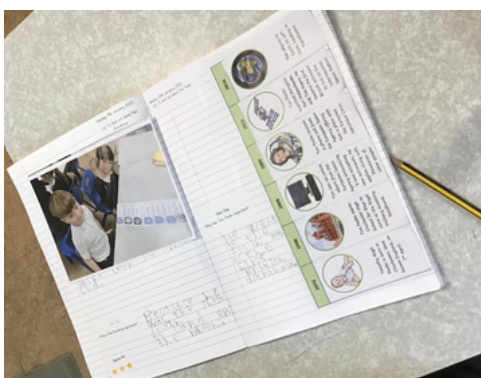
I am writing to apologise to you (Miss Farmer) that an unwell creative is sorry the school grounds. This person does not look like the people I believe that Terrence Finch is another type of animal. I have researched and the knowledge ascribes that another world is in the north. The world is called "Invisible Land..."

Invisible Land consists of gnomes, who act like children. Enormous consists of a swampy house, a withered appearance and a greyish, grassy, thin line. This game can consume up to enormous quantities of nourishment. Terrence can be very picky but can sometimes not consume anything.

Famous (like Terrence) unrelentingly, subtly grow up a mixture of human and gnomes frequently, this creature was outside discovering new things and eating enormous (Centaurs) like leucostictus, mud and more. In my opinion Terrence is trying to create more gnomes replacing home.

To conclude I suggest and recommend for you (Miss Farmer) to take my advice and definitely destroy these horrible animals for our benefit (Safety) the most welcome!

Yours faithfully, George Trew.



Spring Term Events

Date	Time	Year Group	Event	Location
Monday 2 nd - Tuesday 3 rd February		Year 5	Residential Trip	
Wednesday 4 th February		Year 2	WOW Day - Florence Nightingale - children come to school dressed as a nurse, doctor or injured army soldier	Hall
Thursday 5 th February	2:45pm	Year 4 - Blue Class	Class Assembly - parents invited	Hall
Wednesday 11 th February		Year 4	Trip to Natural History Museum	
Thursday 12 th February	2:45pm	Year 4 - Yellow Class	Class Assembly - parents invited	Hall
Friday 13th February		All	Friends of HRPS Non-Uniform day - wear red for Valentine's Day	
Monday 16 th - Friday 20 th February		All	Half-Term	
Monday 23 rd February		All	Children return to school	
Thursday 26 th February	2:45pm	Year 3 - Sapphire Class	Class Assembly - parents invited	Hall
Thursday 5 th March		All	World Book Day - staff and children are invited to come to school dressed as a book character.	
Thursday 5 th March	2:45pm	Year 3 - Teal Class	Class Assembly - parents invited	Hall
Thursday 12 th March	2:45pm	Year 2 - Orange Class	Class Assembly - parents invited	Hall
Thursday 19 th March	2:45pm	Year 2 - Green Class	Class Assembly - parents invited	Hall
Monday 23 rd March	3:45-6:15pm	All	Parent Consultation Evening - appointments times will be made available on ClassDojo	Hall/ Classrooms
Thursday 26 th March	4:00-7:00pm	All	Parent Consultation Evening - appointments times will be made available on ClassDojo	Hall/ Classrooms
Friday 27 th March	2:00pm	All	Last day of term—school finishes at 2:00pm. There will be no after school club on this day.	

Summer Term Events

Date	Time	Year Group	Event	Location
Monday 13 th April		All	INSET day - school closed for all children	
Tuesday 14 th April		All	Children return to school	
Thursday 23 rd April	2:45pm	Year 1 - Purple Class	Class Assembly - parents invited	Hall
Thursday 30 th April	2:45pm	Year 1 - Coral Class	Class Assembly - parents invited	Hall
Thursday 7 th May	2:45pm	Reception - Platinum Class	Class Assembly - parents invited	Hall
Thursday 14 th May	2:45pm	Reception - Gold Class	Class Assembly - parents invited	Hall
Thursday 21 st May	2:45pm	Nursery - Silver & Ruby Classes	Workshop - parents invited	Hall
Monday 25 th - Friday 29 th May		All	Half-Term	
Monday 1 st June		All	Children return to school	
Thursday 11 th June	2:45pm	Year 5 - Amber Class	Class Assembly - parents invited	Hall
Thursday 18 th June	2:45pm	Year 5 - Emerald Class	Class Assembly - parents invited	Hall

Our Leadership Team



Headteacher
Mrs R Parmar



Assistant Headteacher—
Pastoral & Inclusion
Ms D Faure-Alexis



Assistant Headteacher—
Academic &
Lower Key Stage 2 Leader
Mr D de Gouviea-Smith



School Business
Manager
Mrs F Jones



EYFS & Key Stage 1 Leader
Lead Practitioner
Miss M Davidson



Deputy Key Stage 1
Leader
Miss S Hayat



Key Stage 2
Leader
Miss E Naisby

Friends of HRPS

What is a PTA?

PTA stands for Parent Teacher Association. Volunteer organisations like this are usually composed of parents, class reps, teachers and other school staff who come together for regular meetings to discuss the school year and upcoming events.

PTAs bridge the gap between parents, teachers and pupils, helping to build productive relationships and further ensure the school is a place where pupils can thrive.

PTAs are now established in most schools and parents enjoy working closely with teachers, creating bonds with other parents, fundraising for events, working with the local community and learning more about the curriculum.

At our school, we are known as Friends of HRPS.

What do we do?

Friends of HRPS aim to accomplish a range of things, all usually geared at making the school a better place to learn. We work together to raise money with a variety of creative events throughout the school year, encouraging the whole community to get involved.

Friends of HRPS events

In previous years, we have organised summer fetes, Santa's Christmas Grotto, discos and a sponsored walk to name a few.

Why is our role so important?

We give parents more of a voice and get them feeling involved. Parents can provide the school community with a fresh perspective and highlight any concerns in a supportive environment.

The organisations are also instrumental in providing additional opportunities for pupils by strengthening the overall school experience.

Why should you join Friends of HRPS?

Being a part of your child's school community has several benefits:

- Scheduled meetings allow parents to keep up to date with upcoming academic events and socials.
- It creates stronger relationships with staff members, where they can easily communicate expectations and standards of learning.
 - It allows parents to establish relationships and network with other parents.
- Parents can support the school in creating the best environment possible for their child and other pupils, helping make a real difference.
 - Friends of HRPS members can learn new skills, from fundraising and problem-solving to communication and creativity.
- As a member of Friends of HRPS, you'll be able to see measurable results and appreciate the impact of all your efforts!

Please email the Chair, Mrs R Reid-Stavrinides at: ptahrps@gmail.com if you would like to find out more information.

EVERY SCHOOL DAY MATTERS



Penalty Notice Fines for absence from school are changing

From 19th August 2024 Penalty Notice fines increase to £160 for each parent, for each child.



You can be fined if your child has a total of 5 days of unauthorised absences in 10 school weeks, for things like:

- being late after the register has closed
- truancy
- taking a holiday without permission from the school
- or if a headteacher isn't satisfied for the reason for missing school

Over a rolling 3-year period the sanctions are:

- 1st offence – £160 reduced to £80 if paid within 21 days
- 2nd offence – £160
- 3rd offence – Court hearing and up to £2,500 fine, or up to 3 months in prison and a criminal record

For more information go to:
www.centralbedfordshire.gov.uk/missing-school



SEND Dance Classes

Fun and inclusive classes for those with suspected or diagnosed additional needs

Imagine & Move | 4 – 4.30pm

Sensory movement class for those aged 3+
Aimed at those who need support from a parent/carer to participate
£5 per class invoiced termly



Magic Movers | 4.45 – 5.30pm

Creative dance class for those aged 7+
For those who can follow instruction and participate independently
£7 per class invoiced termly

**Introductory offer:
20% off for Spring Term!**

15th January – 26th March (No class 19th February)



Thursdays during term time
at Houghton Regis Leisure Centre

Limited spaces! Book now:
info.imaginationarts@yahoo.com
07394 934911



Central
Bedfordshire
Council





SNAP PARENT CARER FORUM
CENTRAL BEDFORDSHIRE



Partnerships for Inclusion of
Neurodiversity in Schools

**BOOK
NOW!**

FREE Face to Face Sensory Workshops for Parent Carers as part of the PINS Project.

We are excited to announce they will be delivered by
Blossom Therapy's Specialist Level Occupational Therapists.

Supporting Children and Young People with the Morning Transition

- Understanding barriers to leaving the house
- The importance of the morning routine
- Learn helpful tips and strategies to aid regulation prior to school including self care

Session 1:

Date: Wednesday 4th February

Time: 9:45 - 12:30pm

**Venue: Moorfield Room, The Rufus Centre, Steppingley Road, Flitwick,
MK45 1AH**

Training provided by



Blossom
Children's Occupational Therapy

Session 2:

Date: Monday 23rd March

Time: 9.45am - 12.30pm

**Venue: Moorfield Room, The Rufus Centre, Steppingley Road, Flitwick,
MK45 1AH**

Limited spaces available, booking is essential!

Please book your place by emailing 'Morning Transition', your preferred session
(Session 1 or Session 2) and your name to: PINS@snappcf.org.uk.

NB: Both sessions cover the same content



**Bedfordshire, Luton
and Milton Keynes**
Integrated Care Board



**Cambridgeshire
Community Services**
NHS Trust



**BOOK
NOW!**

**FREE Online Workshops for
Parent Carers as part of the PINS Project.**
We are excited to announce they will be delivered by the
British Dyslexia Association.

Supporting Your Child with Dyslexia: A Practical Guide for Parents

Join us for an engaging 2-hour online session designed to help parents better understand and support children with dyslexia at home. This training will cover:

- **Understanding Dyslexia** – What it is and how it affects learning and daily life.
- **How Does It Feel?** – Gain insight into your child's lived experience.
- **Behaviours at Home** – Explore why challenges like homework avoidance and forgetfulness happen.
- **Practical Strategies** – Learn visual tools, technology tips, and ways to create a supportive home environment.
- **Whole Family Understanding** – Foster empathy and teamwork within your household.
- **Next Steps** – When and why to consider a diagnostic assessment.

This session is packed with actionable advice and real-world strategies to make a positive difference for your child and family.

Date: Friday 13th February
Time: 12:00 - 2:00pm



Please book your place by emailing '**BDA Training**', your name and your child's school to: PINS@snappcf.org.uk.

Limited spaces available, booking is essential!



POSITIVELY
INFLUENCING
CHANGE



SNAP PARENT CARER FORUM
CENTRAL BEDFORDSHIRE

BOOKING IS ESSENTIAL



PINS
Partnerships for Inclusion of
Neurodiversity in Schools

This session is delivered by qualified experts who will help you support your child/young person.

Tips sand Tools to Manage
Sensory Differences aims:

- To understand the link between sensory differences and behaviour
- To discover how to work out your child's unique sensory profile
- To explore strategies and adjustments to support your child to manage their sensory differences
- To know where to get more help



Please note...

Add -vance sessions are recorded and available to watch for 7 days after to those booked/attending the session.

www.snappcf.org.uk

We are excited to
announce our...

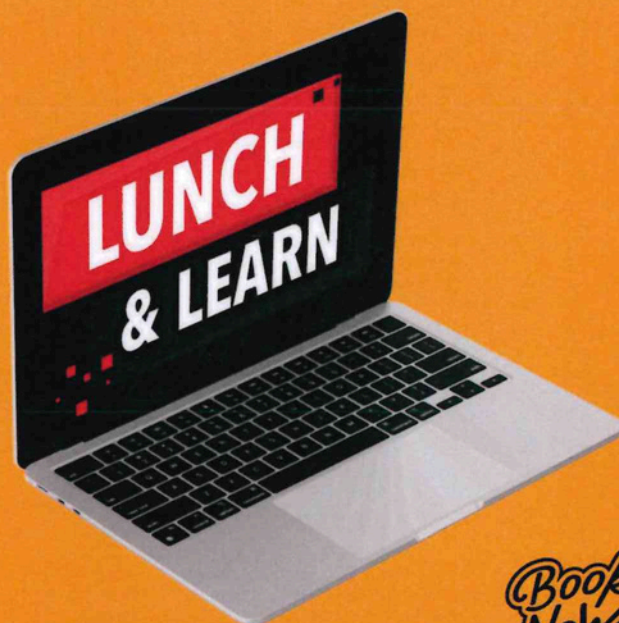
Online training:



Tips and Tools to Manage Sensory Differences

25/02/2026

12:00 pm - 1:30pm



*Book
Now!*

BOOKING IS ESSENTIAL...

DATE : Thursday 25th

February 2026,

12:00 pm - 1:30 pm

*Please book your place directly (click
on the live link) via*

*[https://understanding-sensory-
differences-250226.eventbrite.co.uk/](https://understanding-sensory-differences-250226.eventbrite.co.uk/)*

CLICK HERE



PINS
Partnerships for Inclusion of
Neurodiversity in Schools

POSITIVELY
INFLUENCING
CHANGE



SNAP PARENT CARER FORUM
CENTRAL BEDFORDSHIRE

BOOKING IS ESSENTIAL



Partnerships for Inclusion of
Neurodiversity in Schools

This session is delivered by qualified experts who will help you support your child/young person by discussing the following learning outcomes:

- To understand more about Pathological Demand Avoidance
- To recognise the different ways that PDA may present in children
- To highlight relevant teaching and support strategies
- To explore the strengths associated with PDA
- To know where to get more help



Please note...

Add -vance sessions are recorded and available to watch for 7 days after to those booked/attending the session.

www.snappcf.org.uk

We are excited to
announce our...



Online training:
Understanding
Pathological
Demand Avoidance
(PDA)

Thursday
05/03/2026
12:00 pm - 1:30pm



Book Now!

BOOKING IS ESSENTIAL...

DATE

Thursday 5th March 2026,
12:00 pm - 1:30 pm

*Please book your place by clicking on
the live link*

[https://understanding-pda-
050326.eventbrite.co.uk/](https://understanding-pda-050326.eventbrite.co.uk/)

CLICK HERE

POSITIVELY
INFLUENCING
CHANGE



SNAP PARENT CARER FORUM
CENTRAL BEDFORDSHIRE

BOOKING IS ESSENTIAL



PINS
Partnerships for Inclusion of
Neurodiversity in Schools

This session is delivered by qualified experts who will help you support your child/young person by discussing:

- what is meant by challenging behaviour
- understand why challenging behaviour is more common in neurodivergent children/young people
- identify triggers and underlying needs
- develop strategies which anticipate and prevent challenging behaviour
- know where to get more help



Please note...

Add -vance sessions are recorded and available to watch for 7 days after to those booked/attending the session.

www.snapppcf.org.uk

We are excited to
announce our...

Online training:



Understanding Challenging Behaviours

Thursday

19/03/26

12:00 pm - 1:30pm



Book Now!

BOOKING IS ESSENTIAL...

DATE

Thursday 19th of March

2026, 12:00 pm - 1:30 pm

Please book your place by clicking on
the live link:

<https://understanding-challenging-behaviour-190326.eventbrite.co.uk/>

CLICK HERE

**GO
ALL
IN.**

National
Year of
Reading
2026

Central
Bedfordshire
Libraries

Theatre of Widdershins presents a series of traditional tales

Enjoy family theatre amongst the bookshelves

- **Leighton Buzzard Library - Sat 31 Jan 11am**
- **Shefford Library - Fri 6 Feb 4pm**
- **Dunstable Library - Sat 7 March 11am**
- **Stotfold Library - Fri 13 March 4pm**
- **Barton Library - Tues 31 March 2pm**
- **Flitwick Library - Fri 10 April 2pm**
- **Toddington Library - Sat 9 May 2pm**

Tickets: Children £5, Adults £5 available at the host library or online via eventbrite (booking fee applies)



What Parents & Educators Need to Know about

ROBLOX



WHAT ARE THE RISKS?

ONLINE PLAY RISKS

Because Roblox connects random players across the world, it can put younger players into an environment with anonymous users who could use the platform for nefarious reasons. For example, some role-play games are used for online dates and mature role play, which could expose youngsters to inappropriate messages in the public chat box.

MATURE CONTENT

Content is difficult to moderate throughout Roblox, due to the number of games available. This is particularly notable on smaller games and experiences, but in summary, some of the games and experiences offered on the platform contain age-inappropriate content that could easily be seen by young players.

IN-GAME SPENDING

The majority of games within Roblox have extensive monetisation options, usually through season passes or microtransactions. Purchases can range in value from a few pennies up to much larger sums of money. While some games offer a lot of content via purchases, others can offer very little for real world money, causing younger players to end up out of pocket.

ANONYMOUS PLAYERS

The anonymity of users can leave players vulnerable to bullying, harassment, and predatory behaviour. Without the right parental controls or monitoring, users can connect with each other via personal messages or friend requests, and it is very difficult to know who's behind a username in this vast online world.

RISK OF ADDICTION

Roblox games can feature rewarding or satisfying mechanics that keep players coming back – or persuade them to stay logged-in for much longer. Like most games, they focus on interactivity, with constant rewards via in-game unlocks and currencies, which can sometimes lead to an addictive need to remain online for long periods of time.

SCAMS

Many of the games on Roblox feature collectible items, pets, or characters. These objects, while digital, are worth a lot of real money on certain online markets. Scammers will attempt to trade with younger users in the hopes of getting rare items that can be sold for real money, manipulating the child into handing them over, usually via misleading information.

Advice for Parents & Educators

MONITOR THE CONTENT

While Roblox does implement plenty of moderation tools and parental controls, it's up to parents and guardians to monitor the types of games a child or impressionable player is experiencing. If a youngster wants to play Roblox, be sure to check out which specific games they want to play within it, and get a good idea of their content.

TAKE ADVANTAGE OF TOOLS

Use the parental controls within the game itself and teach youngsters how to report and block other players. Knowing the powers within their reach will make Roblox a safer, happier experience. You can set age ranges for who's allowed to contact you, close public chat boxes, block spending, and even make your Roblox profile completely private. All these options are helpful in cutting off bad actors from engaging with children.

PLAY TOGETHER

Consider playing Roblox with the children in your care. There are few more effective ways to see how monetisation works, gauge whether the game could lead to addictive behaviours, or even witness how interaction between players works, than sitting down and trying the game for yourself. This should help you figure out whether it's suitable for particular children.

TEACH ONLINE BEHAVIOURS

Have an open conversation about the risks of online play and how to spend money wisely. By being honest and giving tips on how a younger user can protect themselves, you can empower them to not only take care of themselves, but others too. Any user can be reported to Roblox moderators by other players for behaving inappropriately. With this knowledge, younger players can be aware of what to look for and help prevent it.

Meet Our Expert

Dan Lipscombe is a videogame journalist and author of over 20 books on gaming, including books on Minecraft, Fortnite, Roblox, and more. For 15 years he has been writing about his passion for gaming. When he's not playing games, he's talking about them at GAMINGbible.



The National College